

Risk Assessment



NORWEGIAN
SMART CARE

LAB

The service package is delivered by subcontractor
Egde in cooperation with NSCL

Risk Assessment

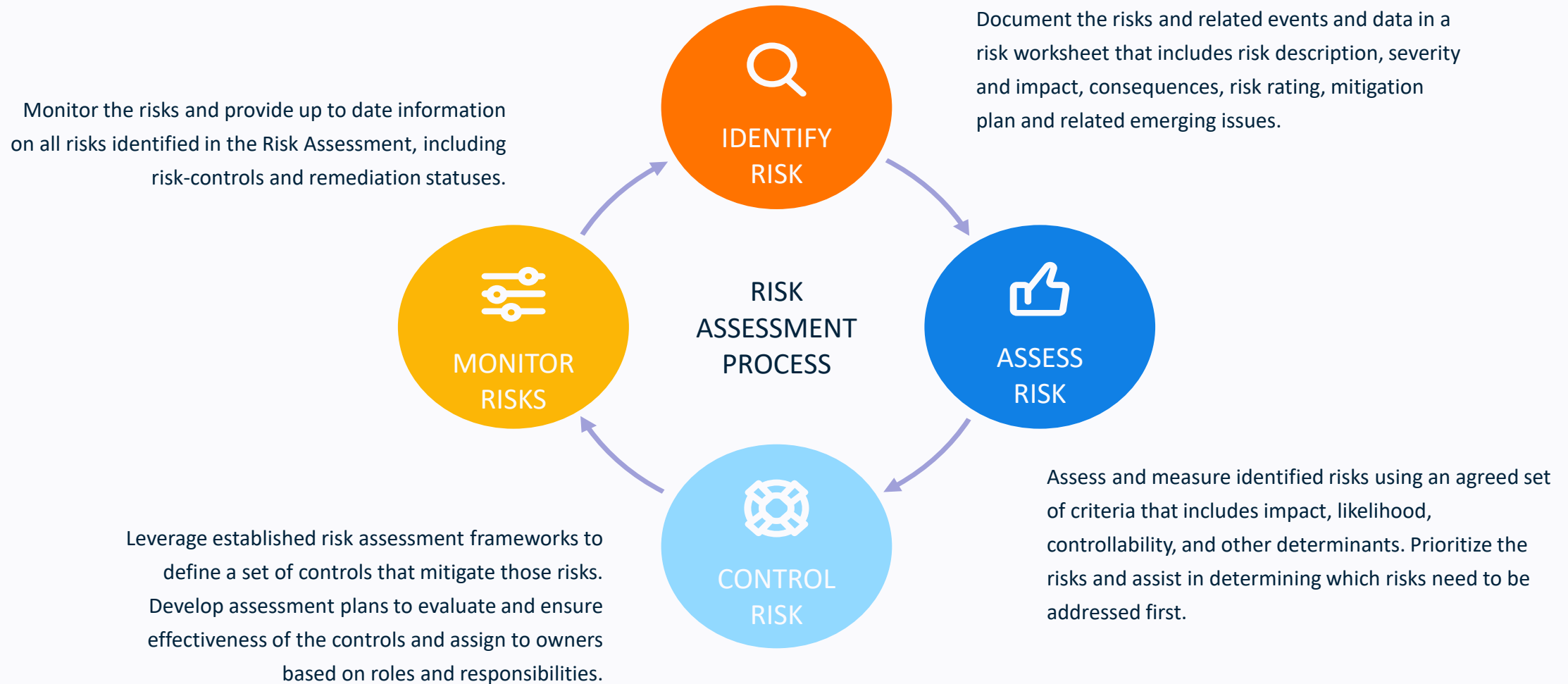
The Risk Assessment approach will help both your organization and your device/service achieve the security level required for the type of data you process.

This service package offers access to Information Security experts with extensive experience in risk management and information security in the Norwegian healthcare sector.

Practicalities

- Target group: members/partners/clients of NSCL
- Preliminary work facilitated by Egde, with inputs from company:
 - Identify the focus area of the workshops
 - Identify the company's needs, set expectations, plan and prepare the three steps of digital workshops that will enable you to conform to national security requirements and recommendations, and properly secure your health and personal data.
- Governance: All participants must sign an NDA

Risk Assessment Process



Step 1 – Initiation and data classification workshop

A workshop between the company and the subcontractor to define a risk assessment plan, and to provide information for the subcontractor to deliver a data classification report to be used as input to the risk assessment.

The company will be expected to share any relevant background information about their technology and data related to the technology.

Workload: 1-2 hours.

During the workshop it is expected that the company will present their product, technology and objectives, as well as key milestones and delivery dates that need to be met. The subcontractor will propose a tailored scale of risk estimation (probability and impact)

Outcome for this step will give the Company

- Risk Assessment Plan
- Overview of dataflow
- Criteria for estimating probability and likelihood
- Defined level of risk acceptance
- Data classification according to sensitivity level and requirements of confidentiality, integrity and availability

Company input/ workload: Provide the subcontractor with technical, design and other relevant information related to the solution. Answer questions related to data and dataflow.

Step 2 – Risk Identification Workshop

This workshop is a collaboration between the Company and subcontractor to identify potential risks and vulnerabilities related to the solution. This workshop may require the presence of other third parties involved in the development of the solution.

In the workshop, the Company or a subcontractor of the company will be asked to present the technical solution design, and the subcontractor will facilitate a discussion to identify potential risks associated with the design and architecture.

With the output from this workshop the Company and subcontractor will have:

- A list of vulnerabilities and documented security risks

Company input/ workload: technical and product input to a workshop of 3 hours plus follow-up questions.

Step 3 – Risk Estimation Workshop

This step consists of an internal subcontractor workshop to document and estimate each risk identified on the previous step. After estimation, the Company will receive a list of all risks and estimations for review and comment.

With the output of this step the Company will have:

- A list of all vulnerabilities and associated risks
- Identified risk level – risks estimated according to agreed upon scale
- Risk treatment strategy for each identified risk

Company input: answer questions via email and online meetings as required. Workload: 2-4 hours.

Outcome: will be presented to the company in a c.1 hour meeting and as excel worksheet

Step 4 – Mitigating Measure Workshop

This step consists of an internal subcontractor workshop to identify and document controls and measure to mitigate risks that are not within the risk acceptance level. All risks are estimated before and after suggested mitigating measures to illustrate the residual risks after measure implementation.

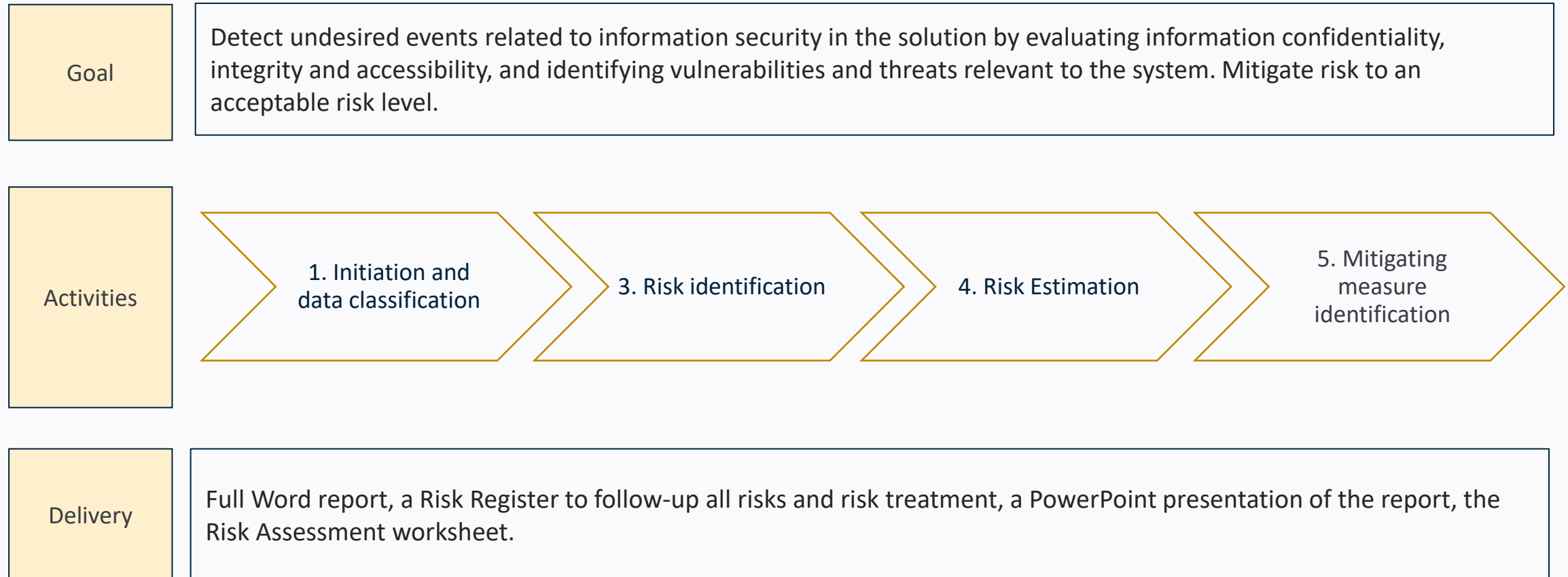
With the output of this step the Company will have:

- All list of risks and measures to mitigate each risks
- Residual risk level (risks after mitigating measures)
- Risk Register for assigning tasks and tracking mitigating all associated risks

Company input: answer questions via email and online meetings as required. Workload: 2-4 hours.

Outcome: will be presented to the company in a c.2 hour meeting and as a PowerPoint presentation.

Preparation & Execution - Summary



Get in touch if you want more information about what the package contains and what the lab can offer your company.



Marit Hagland
Leder
Norwegian Smart Care Lab
+47 452 61 799
Marit.h@valide.no



Karoline Blikra Mogleiv
Forretningsutvikler
Norwegian Smart Care Lab
+47 92 414 043
karoline@valide.no

